



NLSA

National Lutheran  
School Accreditation

**2017**

**Director's Report**

# Still Playing





THE  
LUTHERAN CHURCH  
Missouri Synod

There continues to be great value in  
our Relationship with our National  
Church Body

Our Relationship demonstrates who we  
are, why we exist, and why we teach  
what we believe.



NLSA

National Lutheran  
School Accreditation



NLSA encourages and recognizes schools that provide quality Christian education and engage in continuous improvement.



NLSA

National Lutheran  
School Accreditation

## **NLSA Values:**

1. Lutheran Culture
2. Educational Excellence
3. Continuing Improvement
4. Innovation



## **SCHOOL MINISTRY CRITICAL TARGETS**

- **SCHOOL LEADERSHIP DEVELOPMENT**
- **INNOVATION – QUALITY AND MINISTRY ENHANCEMENT**
- **SERVING CHILDREN BETTER**
- **ALTERNATIVE EDUCATIONAL ALIGNMENTS AND NEW PARTNERSHIPS**
- **EXPANDING AND ENHANCING EARLY CHILDHOOD OPPORTUNITIES**

**30 SLED PARTICIPANTS**

**36 FLAME PARTICIPANTS**



## INNOVATION THROUGH THE SHARING OF POWERFUL PRACTICES

Name of School & Date	Webinar Title
September, 2017 St John's Arnold, MO	Suggestions for Effective Team Ministry
October, 2017 Bethany, Parma, OH	Meeting Every Student's Needs
November, 2017 Zion, Walburg, TX	Effective and Appropriate Administrative Functions (Board and Administrator)





## INNOVATION THROUGH THE SHARING OF POWERFUL PRACTICES

Name of School & Date	Webinar Title
January, 2018 Hales Corners, WI	Securing a Supportive Pastor in a Congregational Vacancy
February, 2018 Concordia, San Antonio	Gifted and Talented
March, 2018 St John, Moore, OK	Disaster Relief – Surviving the Storm
April, 2018 Ascension, Fort Wayne, IN	Integrated Approach between Religion and Chapel



**SERVING CHILDREN BETTER**

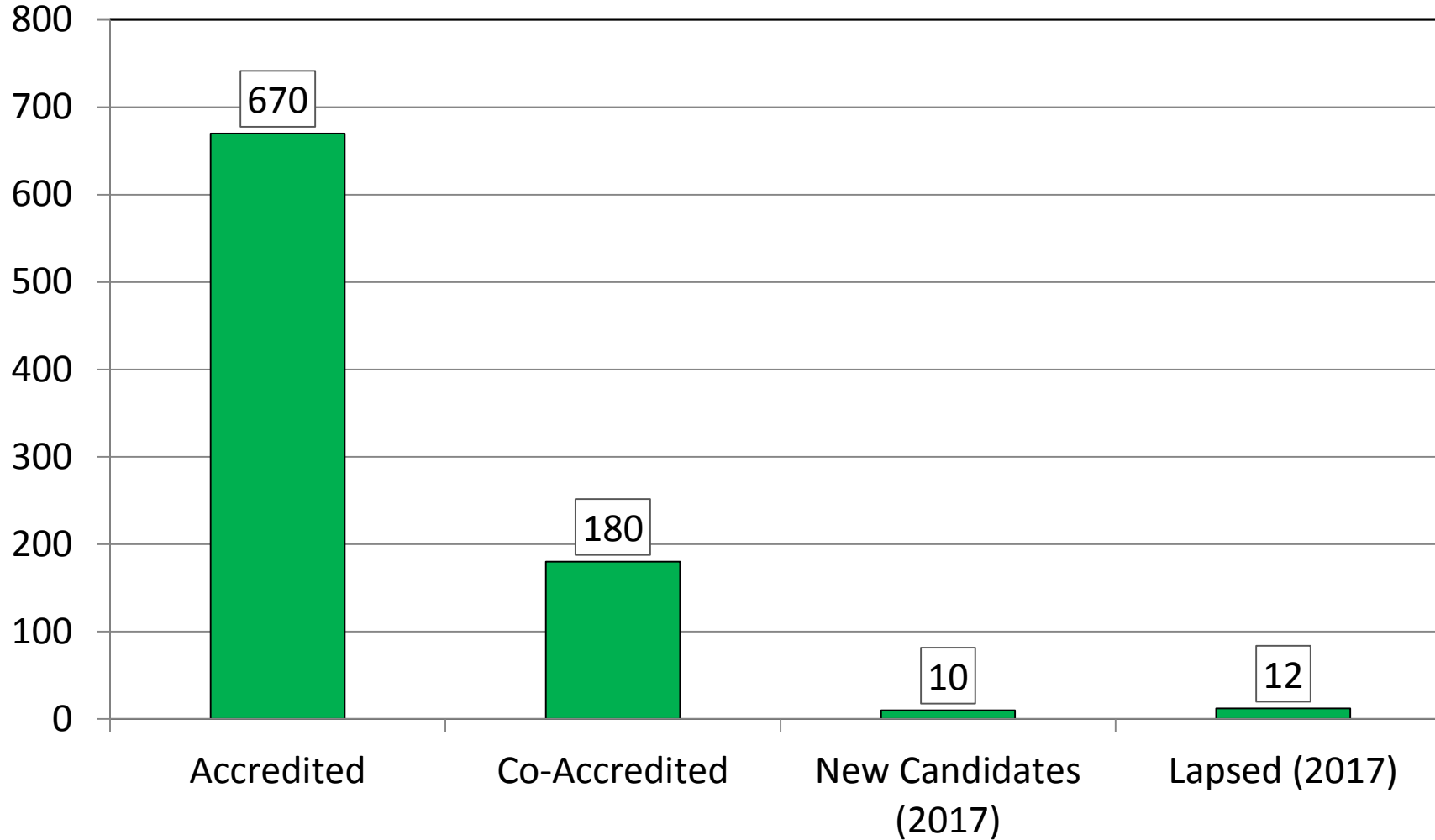
- *Children whose lives are transformed by God's Word.*
- *Children who cling to the cross of Jesus.*
- *Experiencing and celebrating the lavish gifts God bestows on us; his love, grace and mercy and sharing those gifts with others.*



**SERVING CHILDREN BETTER**

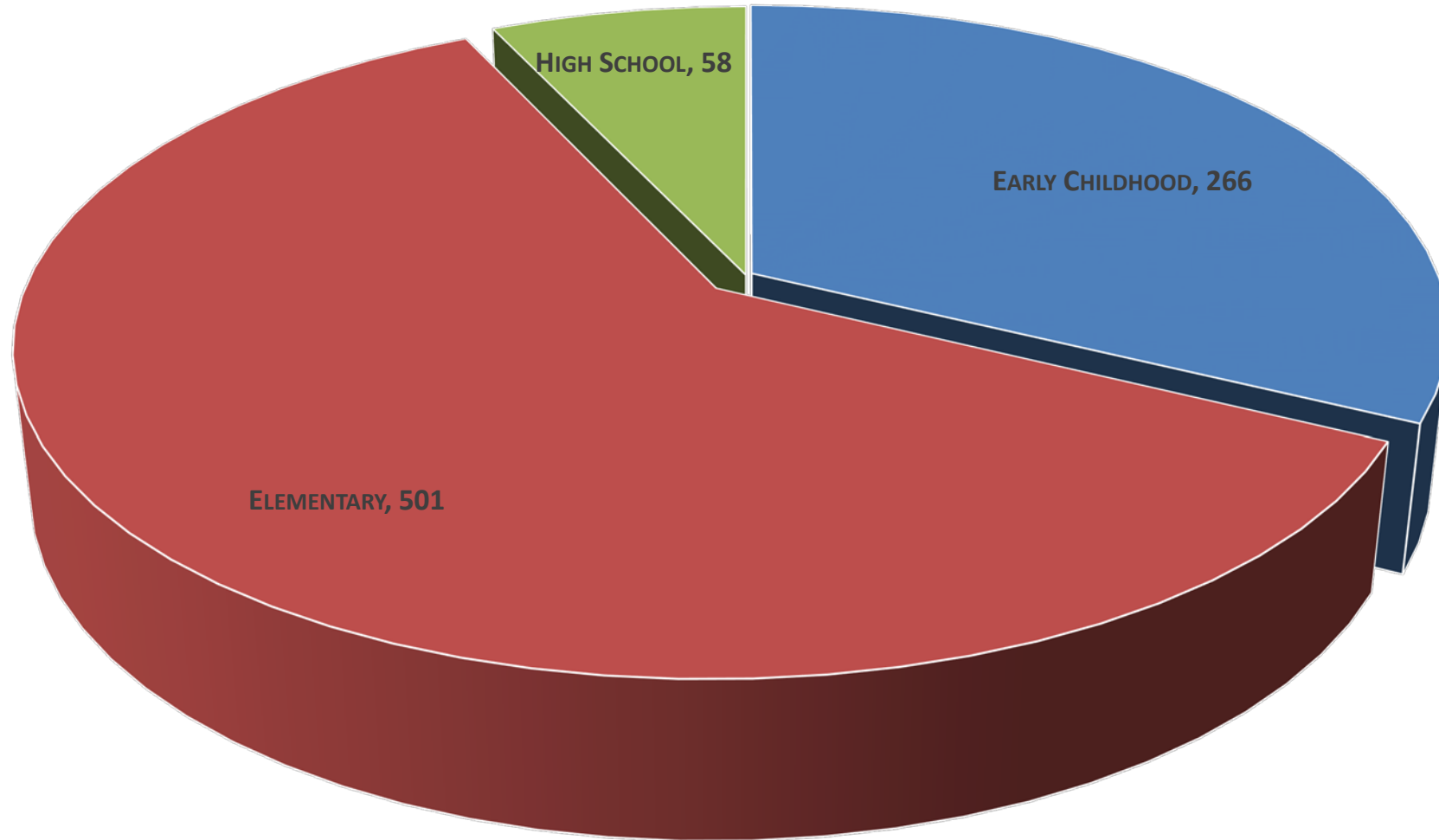
- *Children develop a love for and excitement about learning.*
- *Children become effective communicators (excel at reading, writing and communicating effectively).*
- *Children whose minds are trained for success at the next academic level.*
- *Children with a strong work ethic, critical thinking skills and the ability to relate well with others.*

# Number of Accredited Schools



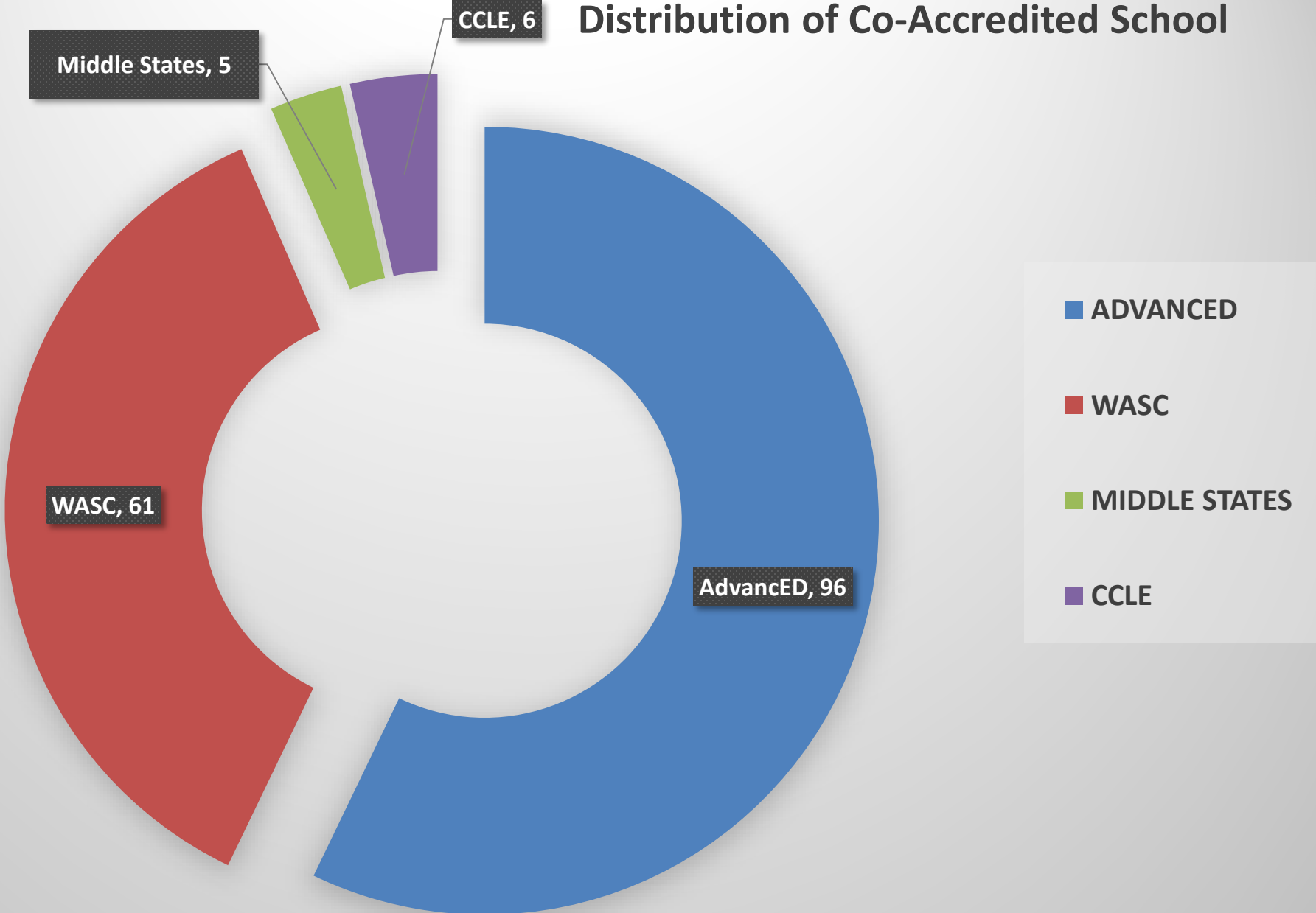
# Schools Accredited by Type

Total: 670



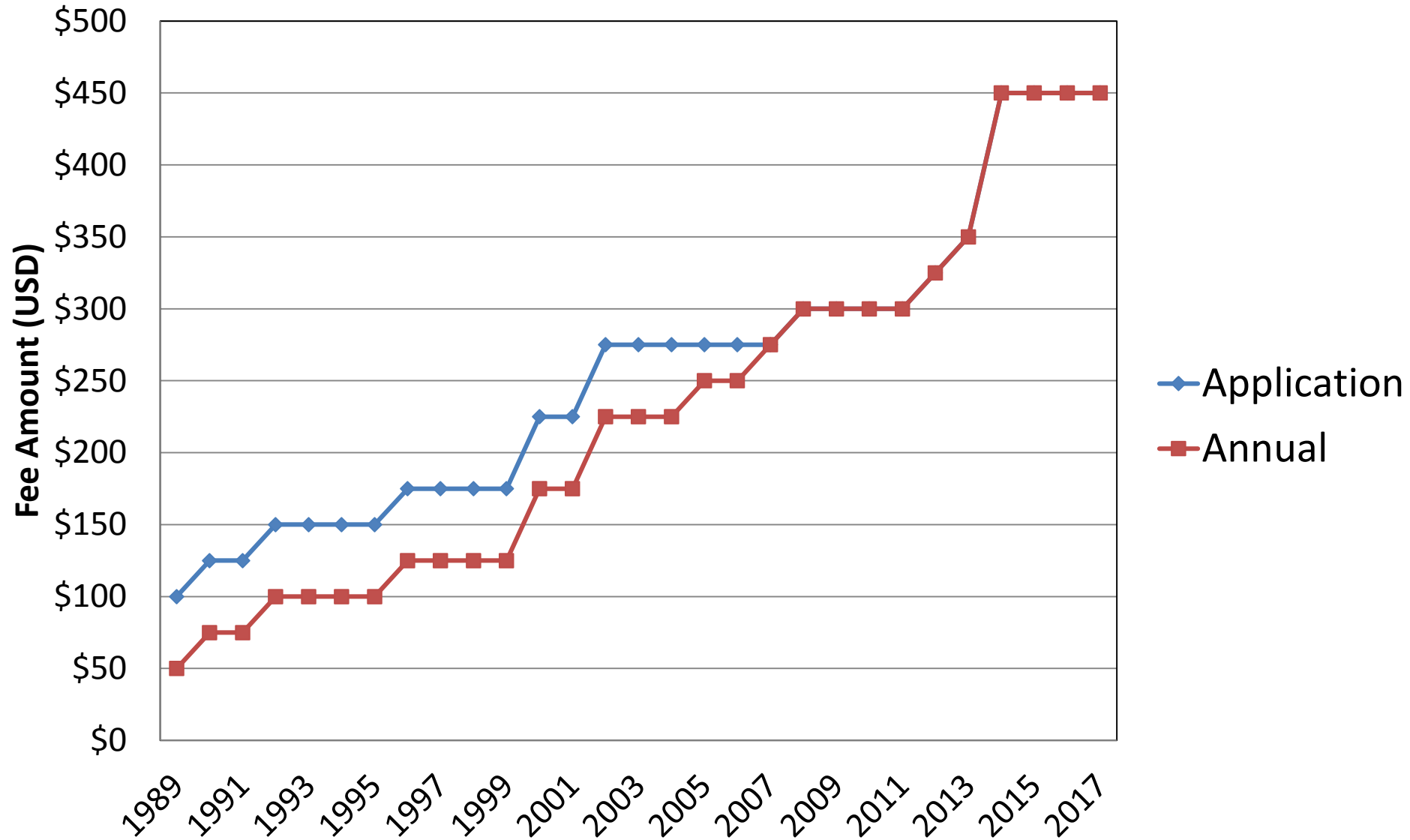
■ EARLY CHILDHOOD ■ ELEMENTARY ■ HIGH SCHOOL

# Distribution of Co-Accredited School



History of Fees – Line Graph

# History of NLSA Fees



# The Future of NLSA Fees



## 2017 Candidate Schools by Protocol used

64 Evidence Based Accreditation

13 Early Childhood

7 Dual Accredited AdvancED

6 Dual Accredited WASC

1 Dual Accreditation CCLE

## Accreditation Extensions

62 Granted in 2014/2015

37 Granted in 2015/2016

32 Granted in 2016/17

# **Our Secular Accrediting Partners**

**Co-accrediting Partnerships** - AdvancED, WASC, Middle States

## **Significant Partnerships with State**

**Agencies** - Arkansas, Indiana, Iowa, Michigan (non-public), Minnesota (non-public), Missouri (non-public) Ohio, Tennessee, Texas (non-public) Wisconsin

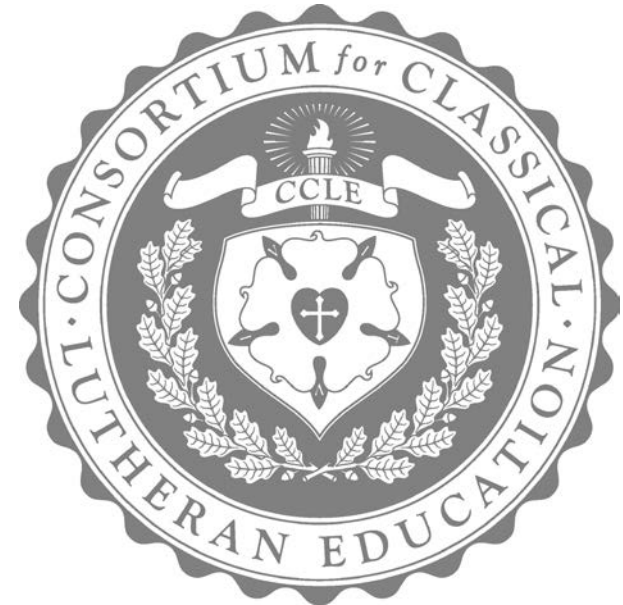
## **Our Partnership with the Consortium of Classical Lutheran Education**

## **Coalition of Christian School Accreditors**

Association of Christian Schools International  
Christian Schools International  
International Christian Accrediting Association  
National Christian School Association



**MIDDLE STATES COMMISSION  
ON HIGHER EDUCATION**



Districts with  
more than 40  
accredited  
schools

Pacific Southwest - 71

Missouri - 60

Indiana - 57

Texas 47

South Wisconsin - 43

Michigan - 41

Florida – Georgia - 41

## Candidate Schools by Name

Trinity	10
St John	8
Immanuel	7
St Paul	5
St Peter	5
Redeemer	5

## EBA Results

<b>2015</b> <b>69 schools</b>	<b>2016</b> <b>73 schools</b>	<b>2017</b> <b>65 schools</b>
<b>3.01 average</b>	<b>2.92 average</b>	<b>2.84 average</b>
16 above average 53 below average	33 above average 40 below average	37 above average 28 below average
10 schools higher than 3.5	2 schools higher than 3.5	1 school higher than 3.5

# Level and Award Changes Effective with 2017 Candidates

*What is a candidate school?*

Accredited in Good Standing

Accredited with Provision

Accredited with Distinction



# Accredited In Good Standing

A school successfully concludes an NLSA process or completes a process associated with recognized accreditation partners, complies with required standards and indicators of success, and is committed to continuing school improvement.

**THIS IS A SIGNIFICANT ACCOMPLISHMENT!**

# Accredited with Provision

An accredited school concludes an NLSA process or completes a process associated with recognized accreditation partners. The school has failed to comply with any single *required evidence or indicator*, or has *major deficiencies*, but demonstrates a commitment to continuing school improvement.

A school that is assigned any EBA general indicator rating of “1” results in the automatic designation of Accreditation with Provision.

## **MAJOR DEFICIENCY:**

Any condition that is based on an NLSA standard which has a severe negative effect on the quality of education, the ministry of the school, and/or endangers the health or safety of the school population. The deficiency must be remedied by the school within the time parameters (no longer than 2 years) prescribed by the visiting team and approved by the NAC.

# Accredited with Distinction

Accreditation with Distinction may be awarded to schools with overall school accreditation averages that fall within the top 5 percent of the group of schools that were accredited within the year.



A Powerful Practice is much more than an expectation that quantifies standard compliance. It innovates and exceeds accreditation expectations. It is an uncommon, calculated risk that has resulted in significant reward for the students. Therefore it is a desirable condition that has ramifications for our schools within the LCMS alliance.



Powerful Practices dramatically improve  
the overall quality of education provided to  
students by the school or significantly  
enhance ministry opportunities that are  
available to the school and its  
congregation(s).

**Powerful Practices drive  
innovation and  
systemic change.**

**Powerful Practices need  
not be associated with  
Schools of Distinction**



NLSA

School Shepherd

## The School Shepherd Award

The Lutheran School Shepherd Award has been established by National Lutheran School Accreditation to honor a faithful pastor who has provided outstanding encouragement, support and service to his school. This award allows NLSA to recognize an excellent school pastor.



# Rev. Kevin Judd, Immanuel, Hamilton, Ohio





## The School Shepherd Award

Through this process, NLSA also honors many pastors who were nominated by their district and provide extraordinary support, service and encouragement for Lutheran schools throughout the United States.

# HIGHLY VALUED TEAM MEMBERS





NLSA

National Lutheran School Accreditation

# Editing and Rebranding Materials

**Letterhead**

**Resources and Documents**

**Certificates and Banners**

**On-line Submission Process**



# Changes coming your way with Early Childhood Education, Resource Development and the Editing Process with EBA Materials

# Succession Planning



# Succession Planning



# Succession Planning





# Succession Planning



# HIGHLY VALUED TEAM MEMBERS





- Working on behalf of every Lutheran school.
- Recognizing quality and encouraging commitment to intentional ongoing improvement.
- Linking schools and leading systemic change.

**Since 1986, no other single program or process has done so much to improve the overall quality of Lutheran schools.**



NLSA

National Lutheran School Accreditation

**YOU**

**Make the Difference**



NLSA

National Lutheran School Accreditation

*I thank my God every time I remember you. In all my prayers for all of you, I always pray with joy because of your partnership in the gospel from the first day until now, being confident of this, that he who began a good work in you will carry it on to completion until the day of Christ Jesus. Philippians Chapter 1*